

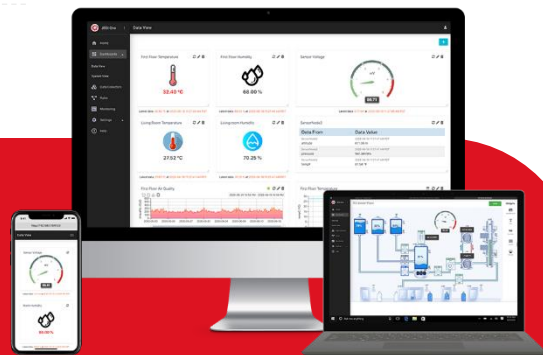
JEDI One

for Windows, Linux and Mac

PRODUCT TECHNICAL SHEET

Machinechat® JEDI One is an all-in-one IoT software application that allows developers and engineers to quickly bundle robust data collection, visualization, monitoring and local storage into any IoT project or proof of concept in minutes. Ideal software solution for quick development of field-ready IoT proof-of-concepts.

PRODUCT FEATURES



- Easily develop and build IoT proof-of-concepts with a beautiful graphical interface in minutes instead of months
- Drag and drop and point-and-click menus allow for easy and quick configuration of dashboards, rules, monitoring and storage.
- Single binary with no other dependencies – just download and run
- Modern browser-based graphical user interface with multi-user support that allows access to JEDI One from anywhere on your network
- On prem, allowing users to eliminate data privacy issues and avoid cloud subscription fees
- Supports SSL for secure access
- One license supports one PC or server and up to 32 devices

HARDWARE AND SYSTEM REQUIREMENTS

- Intel x86 PC or server
- Microsoft Windows 10
- Apple Mac OS 10.13.6 and above
- Ubuntu Linux 16.04 and above

MEMORY AND STORAGE REQUIREMENTS

Memory : 4GB or greater

Storage : 30MB min of disk space



DATA COLLECTION

- Integrated HTTP and TCP data collectors allow for easy device data collection
- Custom data collector plug-ins allow for collecting data from any device, sensor or application without altering their native protocols
- Integrated MQTT server with optional TLS encryption allows for on-prem data collection



DATA MONITORING

- Real-time rules engine for monitoring data
- Email, SMS* and custom alerts
- Networked device monitoring for up to 32 devices

**SMS requires either a Twilio account or cellular carrier with email to text service.*



DATA VISUALIZATION

- Configurable real-time dashboard with support for viewing historical data
- System view allows users to add custom background images and visualize data in the context of the project environment
- Sortable grid view provides single pane visualization of connected devices and sensors



DATA STORAGE

- Configurable local data storage with data retention controls
- Data stored in CSV format is exportable to virtually any application when necessary