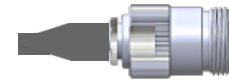


18 INCHES LENGTH



Connector A  
901-9872  
SMA Plug Right Angle  
Brass Gold + Heatshrink



Connector B  
172204  
N-Type Jack Straight  
Brass White Bronze + Heatshrink

50 Ohm RG-316  
Continuity/Hi-Pot

**Assembly & Label Notes**

Assembly label to be placed ~ 2" from end of connector A and/ or heat shrink  
Assembly shall be built with SN96.5 LEAD FREE solder.  
See Routing Notes for additional assembly & testing instructions.

Connector A		Cable		Connector B	
<b>Part #:</b>	901-9872	<b>Part #:</b>	RG-316	<b>Part #:</b>	172204
<b>Description:</b>	SMA R/A PLUG RG174 500	<b>Description:</b>	RG-316 - ST 0.102	<b>Description:</b>	N-Type JK RG174 RG316 LMR100 500
<b>Type:</b>	SMA	<b>Dielectric:</b>	ST	<b>Type:</b>	N-Type
<b>Gender:</b>	Plug	<b>Shielding:</b>	Braid	<b>Gender:</b>	Jack
<b>Body Type:</b>	Right Angle	<b>Diameter:</b>	0.102	<b>Body Type:</b>	Straight
<b>Contact Type:</b>	Solder	<b>Impedance:</b>	50 Ohm	<b>Contact Type:</b>	Solder
<b>Polarity:</b>	Standard	<b>Sheathing:</b>	None	<b>Polarity:</b>	Standard
<b>Impedance:</b>	50 Ohm	<b>Testing:</b>	Continuity Hi-Pot	<b>Impedance:</b>	50 Ohm
<b>Mounting:</b>	Cable	<b>Length:</b>	18 Inches	<b>Mounting:</b>	Cable
<b>Body Material:</b>	Brass			<b>Body Material:</b>	Brass
<b>Body Finish:</b>	Gold			<b>Body Finish:</b>	White Bronze
<b>IP Rating:</b>	None			<b>IP Rating:</b>	None
<b>Contact Material:</b>	Brass			<b>Contact Material:</b>	Phosphor Bronze
<b>Contact Finish:</b>	Gold			<b>Contact Finish:</b>	Gold
<b>Max. Freq.:</b>	12.4 GHz			<b>Max. Freq.:</b>	11 GHz
<b>Booting:</b>	SMA Plug Right Angle			<b>Booting:</b>	N-Type Jack Straight
				<b>Clacking:</b>	0°



CONTROLLED DOCUMENT - DO NOT COPY

THIS DRAWING MAY CONTAIN PATENTED OR PROPRIETARY INFORMATION AND MUST NOT BE USED FOR ANY PURPOSE DETRIMENTAL TO CUSTOM CABLE INC. IT MAY NOT BE REPRODUCED OR TRANSCRIBED IN ANY FORM WITHOUT THE WRITTEN CONSENT OF CUSTOM CABLE INC. ACCEPTANCE OF THIS DRAWING ESTABLISHES AND AGREEMENT OF THE FOREGOING.

Title:  
**SMA-RA-PL/N-ST-JK G316 18I**

Part No:  
**Q-340200005018I**

**UNLESS SPECIFIED**  
TOLERANCE:  
0-18 inches +/- 1/2"  
over 18" +/- 2%  
ASSEMBLY:  
CENTER LABEL IF LENGTH  
IS LESS THAN 12 INCHES