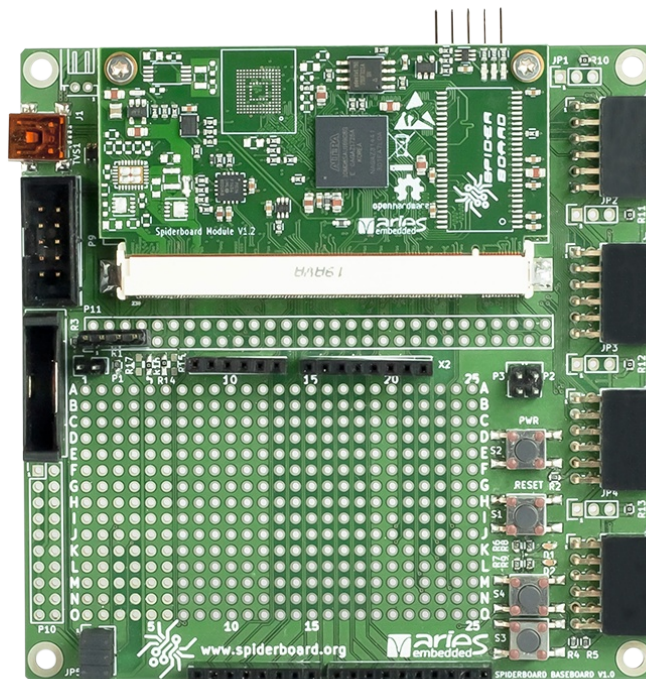


SPIDERBOARD Baseboard

The Spiderboard Baseboard is a unique baseboard, designed to host the Spiderboard SoM / MX10 SoM based on Intel® (former Altera®) MAX®10 FPGA. Spiderboard Baseboard is available as a low cost and extremely flexible platform which enables user to setup a running system according to the required specification in a very short time. This baseboard has a large prototype area and is based on the free and open design concept: KiCAD design files are available under CERN OHL v1.2.



■ Features:

- simple baseboard in 2 layer design
- compatible with MX10 and Spiderboard SoM
- open hardware
- MxM2 pcb edge connector
- .1" grid 25x15 prototyping area
- 4 PMOD compatible **connectors**
- reset, power and 2 user push buttons
- 2 user LEDs
- Arduino shield compatible interface
- Intel USB Blaster programming interface
- USB mini B connector
- CR2032 cell holder
- JST-2.0 lithium battery connector
- configuration jumpers



ARIES Embedded GmbH
Schöngesinger Str. 84
82256 Fürstenfeldbruck
Germany

Fon: +49 (0)8141.36 367-0
Fax: +49 (0)8141.36 367-67

www.aries-embedded.de
info@aries-embedded.de