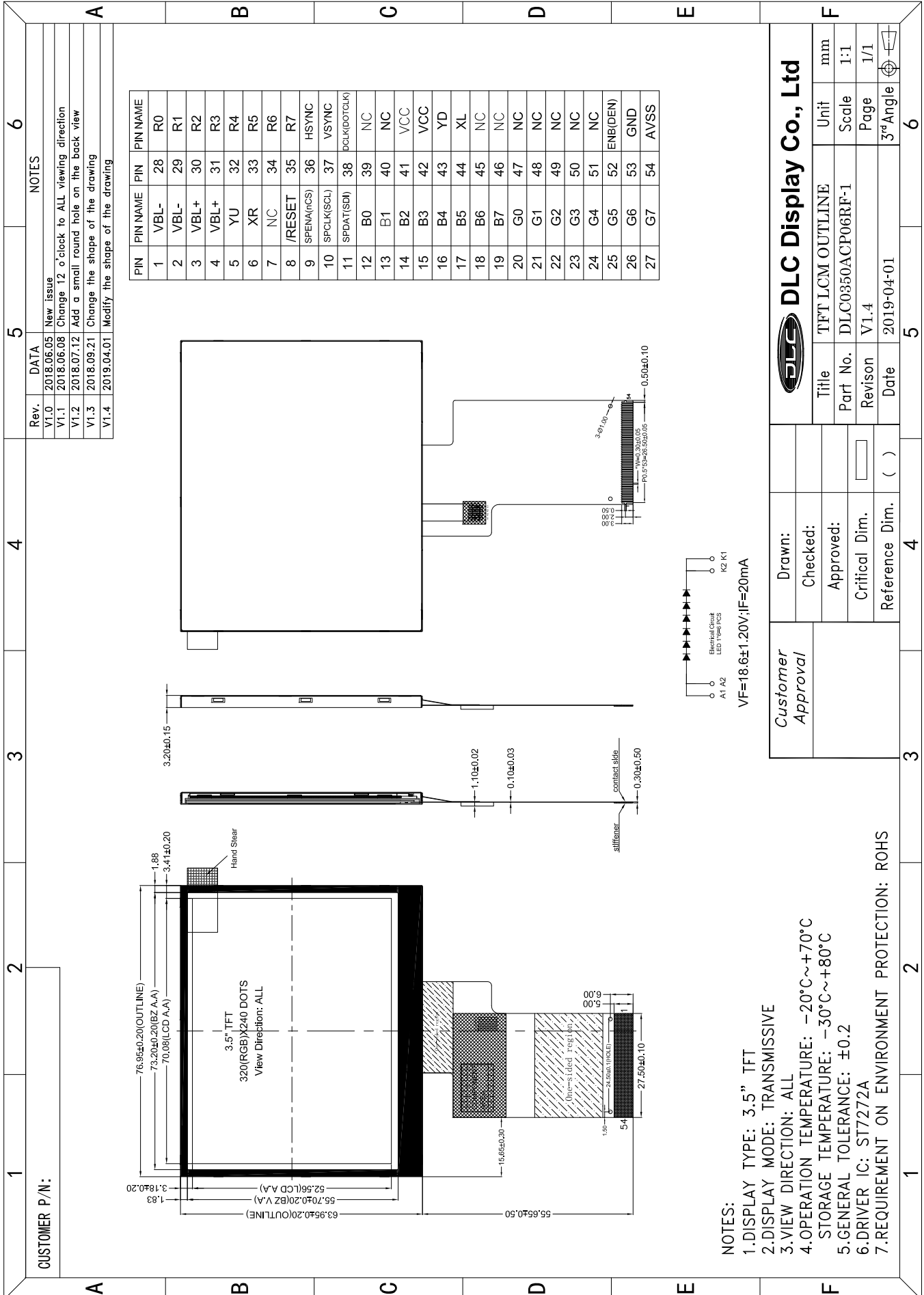


Outline Drawing



NOTES:
 1. DISPLAY TYPE: 3.5" TFT
 2. DISPLAY MODE: TRANSMISSIVE
 3. VIEW DIRECTION: ALL
 4. OPERATION TEMPERATURE: -20°C~+70°C
 STORAGE TEMPERATURE: -30°C~+80°C
 5. GENERAL TOLERANCE: ±0.2
 6. DRIVER IC: ST7272A
 7. REQUIREMENT ON ENVIRONMENT PROTECTION: ROHS

DLC Display Co., Ltd	
Title	TFT LCM OUTLINE
Part No.	DLC0350ACP06RF-1
Revision	V1.4
Date	2019-04-01
Unit	mm
Scale	1:1
Page	1/1
3rd Angle	

Customer Approval	Drawn:	()
	Checked:	()
	Approved:	()
	Critical Dim.	()
	Reference Dim.	()

